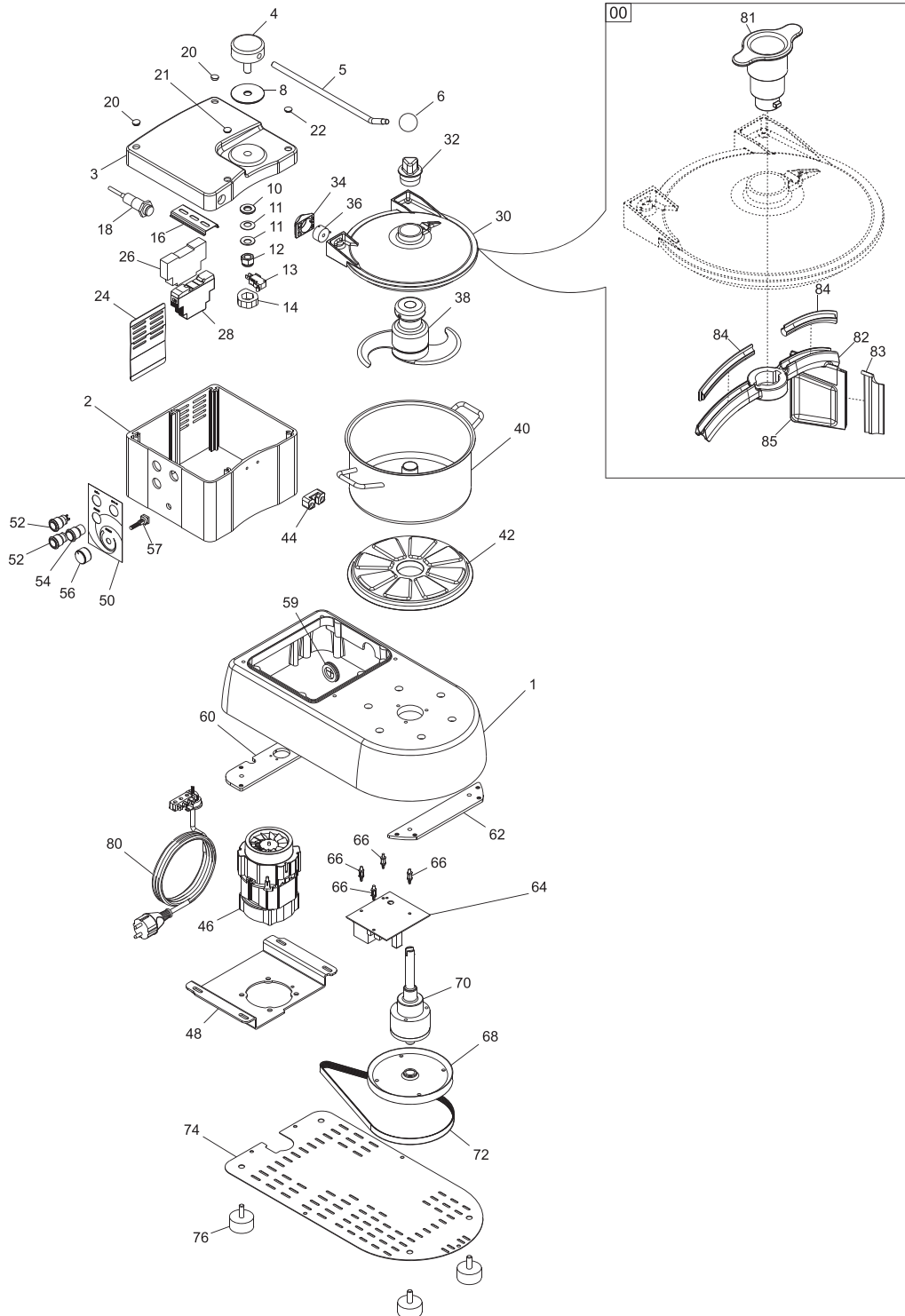


# Parts Breakdown

Model FP-IT-0004-VT 47261



# Parts Breakdown

## Model FP-IT-0004-VT 47261

Item No.	Description	Position	Item No.	Description	Position	Item No.	Description	Position
AH741	Scraper Spatula 4 for 47261	00	AH755	Control Unit NC 11 01 for 47261	26	AH769	Rubber Grommet 9 for 47261	59
AH742	Base 6 Bril. for 47261	01	AH756	Switching Power Supply 24VDC 12W for 47261	28	AH770	Long Foot Plate 6 for 47261	60
AH743	Neck 4 Oss. for 47261	02	AH757	Cover Compl. + Guarn. 6 for 47261	30	AH771	Short Foot Plate 6 for 47261	62
AH744	Head 4-6 Bril. for 47261	03	AH758	Cover Cap 9 for 47261	32	AH772	Pot 4-6 Board Y19 230 MN for 47261	64
AH745	Lever Flange 9 for 47261	04	AH759	Magn. Unit Holder Lock 6 for 47261	34	AH773	6 Card Spacer for 47261	66
AH746	Rod Lever 6 for 47261	05	AH760	Magnetic Unit Coded N 180 HA for 47261	36	AH774	Variotr Hub Pulley for 47261	68
AH747	Upper Ice Knob for 47261	06	61572	Shaft with Regular Knives for 47261	38	AH775	Complete Hub Pulley 4 for 47261	70
AH748	Clutch Washer Lever 9 for 47261	08	37158	Bowl for 47261	40	17764	Belt for 47261	72
AH749	Cam Thickness Washer 9 for 47261	10	AH761	Pot Lift 6 for 47261	42	AH776	Cover 6 for 47261	74
61573	Cup Spring 12.2x25x0.7 for 47261	11	AH762	Cooker Lock 4-6 for 47261	44	AH777	Foot 40x20 M8x23 for 47261	76
37151	Clutch Nut for 47261	12	60295	Motor 110V 50Hz for 47261	46	AH778	Power Cable Comp. Suko with PA244S for 47261	80
AH750	Microswitch with Lever for 47261	13	AH763	Motor Slide 6 for 47261	48	AH779	Spatula Handle 9 for 47261	81
37152	Microswitch Cam for 47261	14	AH764	Show Commands Inv. for 47261	50	AH780	Spatula Arm 6 for 47261	82
AH751	Din Rail Control Unit 9 for 47261	16	AH765	Stainless Steel Button with Light Y10 for 47261	52	AH781	Pot Scraper 4 for 47261	83
AH752	Coded Sensor N180 FB M18 for 47261	18	AH766	Stainless Steel Button Y10 for 47261	54	AH782	Rubber Arm Spatula 6 for 47261	84
AH753	Head Screw Caps Set for 47261	22	AH767	Potentiom Knob. D.24 VT for 47261	56	AH783	Supp. Scraper Pot 4 for 47261	85
AH754	Ventilation Sheet 4 for 47261	24	AH768	Power Wired for 47261	57			